

## UL Online Certifications Directory

### BXUV.U542 Fire Resistance Ratings - ANSI/UL 263

Page Bottom

---

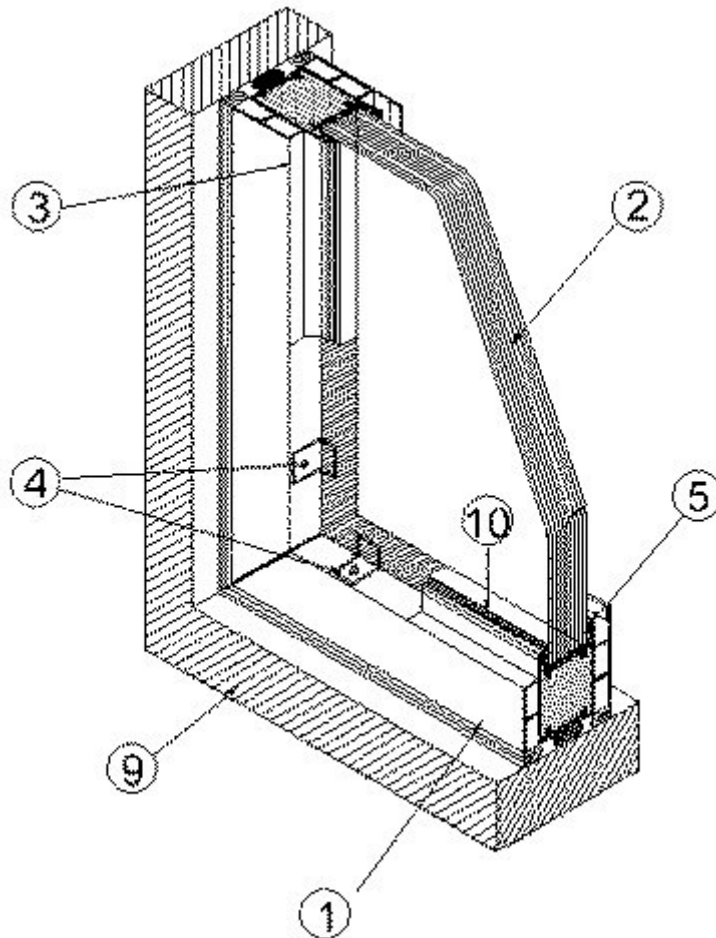
### Fire Resistance Ratings - ANSI/UL 263

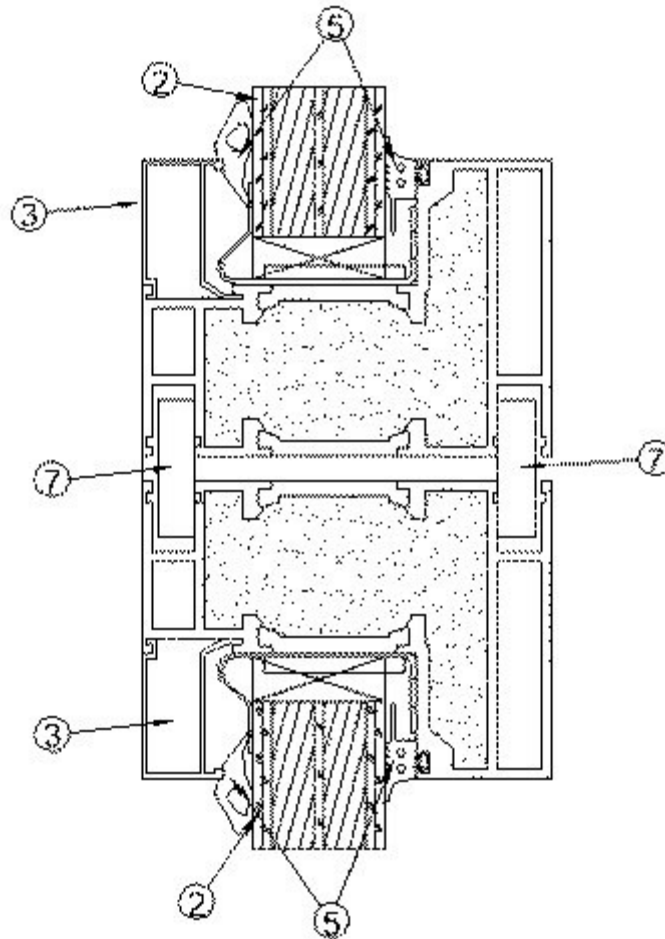
[See General Information for Fire Resistance Ratings - ANSI/UL 263](#)

**Design No. U542**

March 10, 2006

**Non-Bearing Wall Rating — 1**





1. **Composite Framing Members\*** — Nom 3.35 in. (85 mm) wide with lengths cut according to glazing opening size. Secured to steel studs with zinc coated TX-30, nominal 2-1/2 in. long self drilling, screws spaced nominally 17 in. OC and 4-1/2 in. from either end.

**ALUFLAM NORTH AMERICA L L C** — Aluflam Framing Material

2. **Fire Resistant Glazing Material\*** — Nom. 1-1/16 in (27 mm) minimum thickness laminated glass supplied in various sizes. Max size not to exceed 30.9 sq ft with max exposed light dimensions of 94-13/16 in. When Swissflam Structure 60-N2 with a 31 mm nominal thickness is used, the exposed height of glass is not to exceed 94-5/8 in. but the overall width can be greater than 94-13/16 in. due to the joint feature incorporated into the Swissflam Structure product.

**VETROTECH SAINT-GOBAIN** — Swissflam 60-N2, Contraflam 60-N2, , Swissflam Structure 60-N2

3. **Glazing Beads** — Supplied with the framing members. Nominal 17 mm wide aluminum beads of various sizes, cut to fit tightly along the perimeter of both sides of glazing material. Beads snap into the extrusion that is part of the framing member (Item 1).

4. **Retaining Clips** — 1/32 in. thick stainless steel retaining clips, 3/4 in. wide by 2 in. long with a 7/16 in. vertical leg were provided with the frame. Clips are supplied with the framing members (Item 1) and are attached to the framing member with 1/8 in. diameter by 5/8 in. long machine screws. The clips are to be located at 12 in. OC along every framing member.

5. **Glazing Seals** — Nominal 1/4 in. deep PVC seals applied to the glazing bead and the fixed stop of the frame on either side of the glazing material (Item 2). Seals are cut to length to match the framing materials and are supplied with the framing members.

6. **Aperture Lining** — (not shown) - 2.25 mm thick by 30 mm wide intumescent tape supplied with the framing material. Self-adhesive material is used to line the inside of the framed openings to form the bottom of the glazed pocket. Material should be the same width as the glazing material (Item 2).

7. **Spline Assembly** — Multiple smaller frames can be combined to create larger assemblies when the framing members (Item 1) include a groove in the profile for the acceptance of a spline on both sides of the extrusion. The aluminum splines are to be 1 in. wide by 5/32 in. thick and cut to length to match the width or height of the assembly. The splines are to be supplied with the framing members and include a PVC jacket for installation.

8. **Screws** — (Not Shown) Frames muller together with the splines (Item 7) are then to be mechanically fastened to each other with zinc coated TX-30 steel screws located nom. 4-1/2 in. from either end and every 17-1/2 in. OC maximum through the center of each framing member.

9. **Wall Assembly** — The 1 or 2 hr fire rated wall assembly shall be constructed of the materials and in the manner described in the individual U300, U400, or U900-Series Wall or Partition Designs in the UL Fire Resistance Directory.

10. **Silicone Sealant** — A bead of silicone sealant is applied between glazing bead (Item 3) and glazing material (Item 2) joint.

11. **Shims** — (Not Shown)—Nom. 3/4 in. wide by 1/8 in. thick hard fiber or hardwood or calcium silicate shims placed on bottom of glazing opening formed by framing member (Item 1) to set glazing material (Item 2).

\*Bearing the UL Classification Mark

Last Updated on 2006-03-10

[Questions?](#)

[Notice of Disclaimer](#)

[Page Top](#)

[Copyright © 2006 Underwriters Laboratories Inc.®](#)

The appearance of a company's name or product in this database does not in itself assure that products so identified have been manufactured under UL's Follow-Up Service. Only those products bearing the UL Mark should be considered to be Listed and covered under UL's Follow-Up Service. Always look for the Mark on the product.

UL permits the reproduction of the material contained in the Online Certification Directory subject to the following conditions: 1. The Guide Information, Designs and/or Listings (files) must be presented in their entirety and in a non-misleading manner, without any manipulation of the data (or drawings). 2. The statement "Reprinted from the Online Certifications Directory with permission from Underwriters Laboratories Inc." must appear adjacent to the extracted material. In addition, the reprinted material must include a copyright notice in the following format: "Copyright © 2006 Underwriters Laboratories Inc.®"

An independent organization working for a safer world with integrity, precision and knowledge.

