



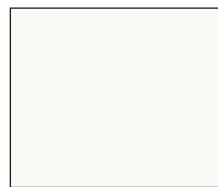
Bone White
UC43350



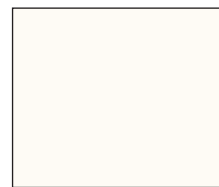
Graham White
UC72638



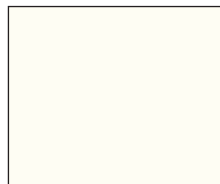
Bone White
UC109880



Kuala White
UC74215



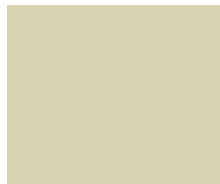
Bright White
UC55026



Colonial White
UC54983



Sahara Sand
UC72861



Sandstone
UC109856



Plymouth Rock
UC127887



Seawolf
UC109855



Fairview Taupe
UC105741



Medium Bronze
UC109862



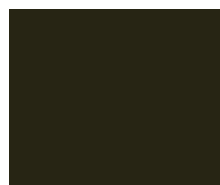
Chocolate
UC12842



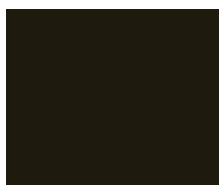
TW Brown 058
UC122830



Bronze
UC122151



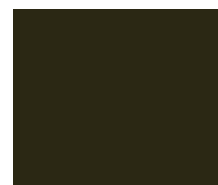
Bronze
UC109850



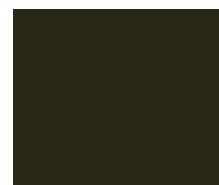
Statuary Bronze
UC123842



Earthtone
UC124848



Bronze
UC110460



Statuary Bronze
UC43347



Gray Timber Wolf
UC115419



Gray Sparkle
UC125548



Dove Gray
UC109848



Fashion Gray
UC51825



Telegray II
UC125485



Eclipse Gray
UC106669



Charcoal
UC109582



Charcoal Gray
UC54271



Birchmount Gray
UC128701



Black
UC40577

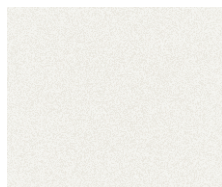
See our website for our full range of finish options: www.aluflam-usa.com

Contact: **ALUFLAM NORTH AMERICA** - 16604 Edwards Road, Cerritos, California 90703

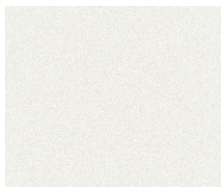
Phone: 562.926.9520 Fax: 562.404.1394

E-mail: specifications@aluflam-usa.com

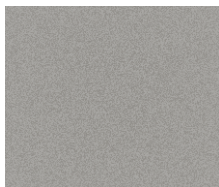
Copyright © 2021 Aluflam North America



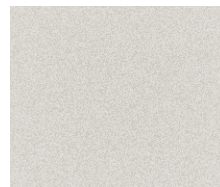
Sunlight Silver
UC10668F



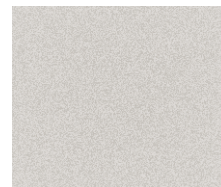
Platinum Mica
UC106682F



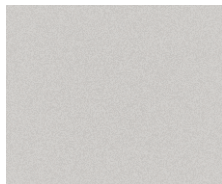
Silver Gray
UC70192F



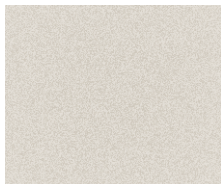
Arcadia Silver
UC70123F



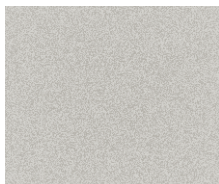
Silversmith
UC70092F



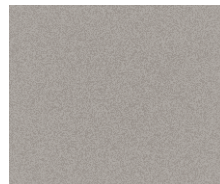
Anodic Clear
UC110423F



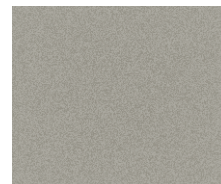
Galaxy Silver
UC106683F



Satin Nickel
UC106684F



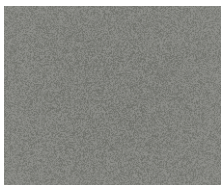
Pewter
UC110227F



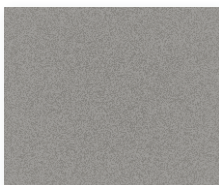
Pewter
UC70191F



Silverstorm
UC106685F



Medium Gray
UC102662F



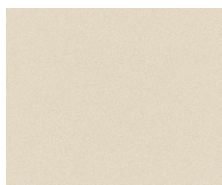
Gray Velvet
UC70214F



Cosmic Gray Mica
UC1106686F



Graphite Gray
UC110628F



Manhattan Beige Pearl
UC106687F



Moondust Mica
UC106688F



Natural Suede
UC106666F



Champagne Bronze
UC70202F



Champagne
UC70104F



Cashmere Pearl
UC106689F



Harvest Gold Pearl
UC106690F



Driftwood Mica
UC106692F



Bronze
UC120894F



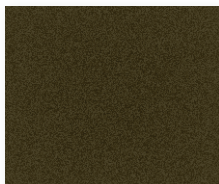
Bronze
UC125046F



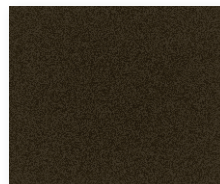
Bistro Bronze
UC106693F



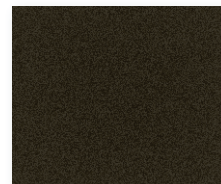
Dark Bronze
UC70149F



Dark Briar Mica
UC106694F



Bronze
UC130935F



Cafe Noir Pearl
UC106695F

See our website for our full range of finish options: www.aluflam-usa.com

Contact: **ALUFLAM NORTH AMERICA** - 16604 Edwards Road, Cerritos, California 90703

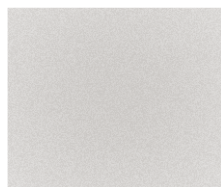
Phone: 562.926.9520 Fax: 562.404.1394

E-mail: specifications@aluflam-usa.com

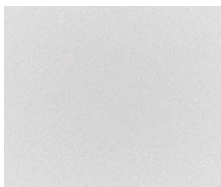
Copyright © 2022 Aluflam North America

DURANAR XL COLORS

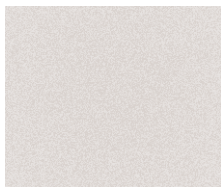
(Three coats: primer, color coat and clear coat)
Custom Color Match Available



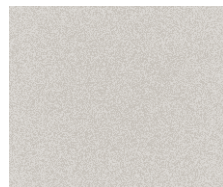
Silver
UC51131XL



Platinum
UC106704XL



Space Silver
UC20413XL



Bright Silver
UC119338XL



Bright Silver
UC57638XL



Steel-City Silver
UC106705XL



Champagne Metallic
UC70178XL



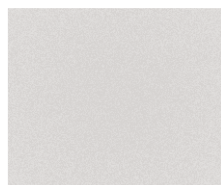
Silver Gray
UC50958XL



Silver Shadow
UC106707XL



Medium Gray
UC51595XL



White Ice Metallic
UC106706XL



Pewter
UC51713XL



Pewter
UC120773XL



Graphite Gray
UC115095XL



Black Metallic
UC99630XL



Champagne Gold
UC51568XL



Fawn Metallic
UC106710XL



Copper Metallic
UC123881XL



Summer Suede Metallic
UC106712XL



Shield Bronze
UC131645XL



Medium Bronze
UC51515XL



Lexus Bronze
UC129106XL



Dark Wood
UC120754XL



Dark Bronze
UC51602XL



Bronze
UC121032XL



Pearl Gold
UC126819XL



Gold
UC123931XL



Bright Copper
UC122076XL



Copper Penny
UC127334XL



Dark Copper Canyon
UC124658XL

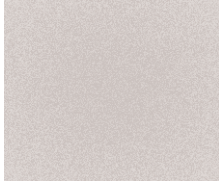
See our website for our full range of finish options: www.aluflam-usa.com

Contact: **ALUFLAM NORTH AMERICA** - 16604 Edwards Road, Cerritos, California 90703

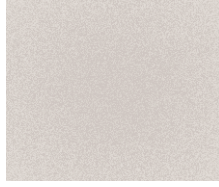
Phone: 562.926.9520 Fax: 562.404.1394

E-mail: specifications@aluflam-usa.com

STAINLESS STEEL



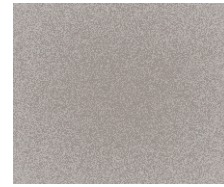
Stainless Steel
UC106931XL



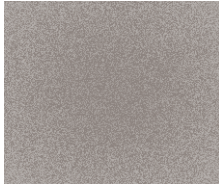
Stainless Steel
UC99115F



Champagne Gold
UC120150XL

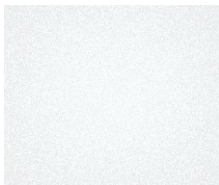


Stainless Steel
UC121394XL



Stainless Steel
UC121575XL

TEXTURED



Bone White Texture
UC43350T



Black Texture
UC40577T

MAKING YOUR COLOR CHOICE

- AAMA 2605 Superior Performing Organic Coatings**
 70% PVDF resin-based coatings. These coatings offer the best performance for outdoor exposure in terms of resistance to humidity, color change, chalk, and gloss retention. This is a long-lasting durable finish that withstands the harshness of nature and time. No other coatings on aluminum are superior.
- AAMA 2604 High Performance Organic Coatings**
 50% PVDF resin-based coatings. They offer good color and gloss retention for outdoor exposure. It offers good hardness and abrasion resistance. These coatings are often used for storefront, doors, or other high traffic areas.
- Colors are a digital representation only and are not a true reflection of the actual finished surface. In addition, if screens are not calibrated, colors are not likely to appear similar to physical finished product.
 DO NOT choose a color based on a digital representation. Physical samples are available upon request (some fees may apply).

See our website for our full range of finish options: www.aluflam-usa.com

Contact: **ALUFLAM NORTH AMERICA** - 16604 Edwards Road, Cerritos, California 90703

Phone: 562.926.9520 Fax: 562.404.1394

E-mail: specifications@aluflam-usa.com