



Design No. U544
BXUV.U544
Fire-resistance Ratings - ANSI/UL 263

[Page Bottom](#)

Design/System/Construction/Assembly Usage Disclaimer

- Authorities Having Jurisdiction should be consulted in all cases as to the particular requirements covering the installation and use of UL Certified products, equipment, system, devices, and materials.
 - Authorities Having Jurisdiction should be consulted before construction.
 - Fire resistance assemblies and products are developed by the design submitter and have been investigated by UL for compliance with applicable requirements. The published information cannot always address every construction nuance encountered in the field.
 - When field issues arise, it is recommended the first contact for assistance be the technical service staff provided by the product manufacturer noted for the design. Users of fire resistance assemblies are advised to consult the general Guide Information for each product category and each group of assemblies. The Guide Information includes specifics concerning alternate materials and alternate methods of construction.
 - Only products which bear UL's Mark are considered Certified.
-

BXUV - Fire Resistance Ratings - ANSI/UL 263

BXUV7 - Fire Resistance Ratings - CAN/ULC-S101 Certified for Canada

[See General Information for Fire-resistance Ratings - ANSI/UL 263](#)

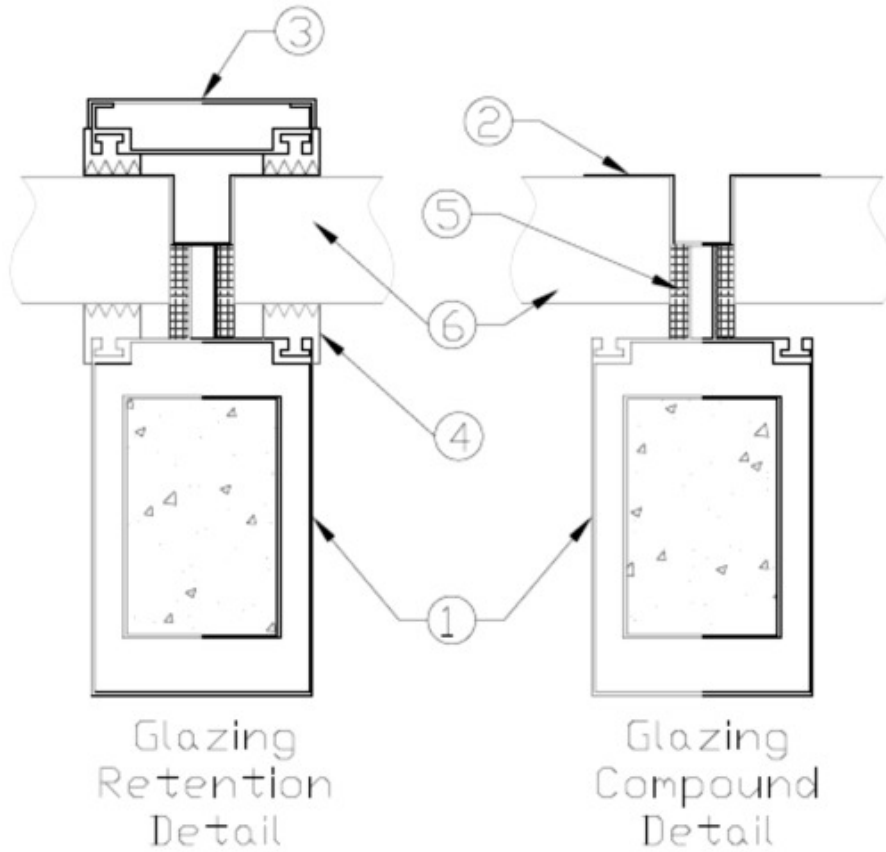
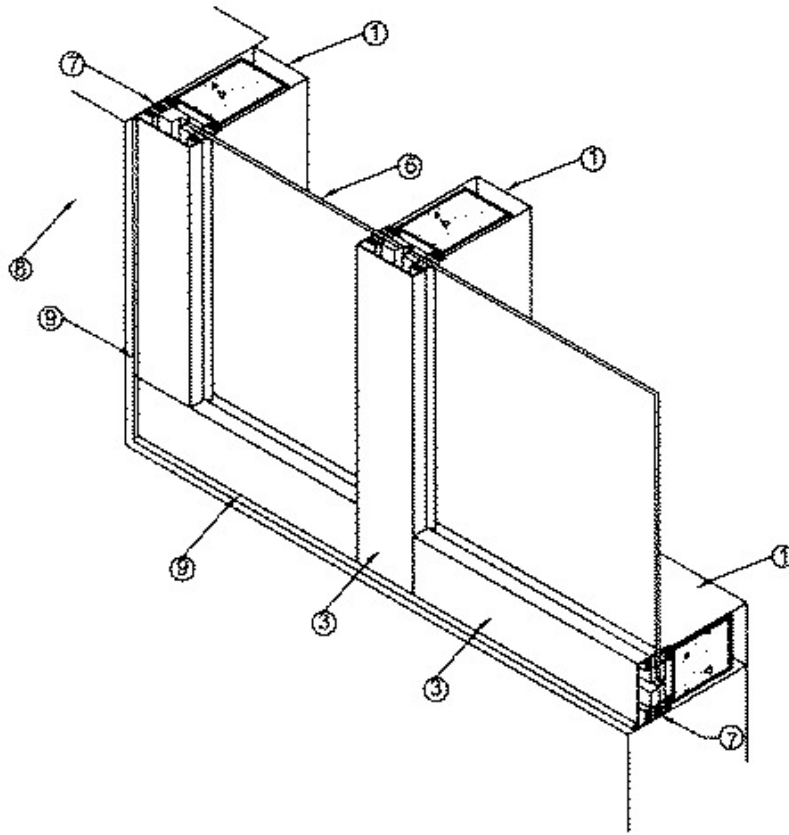
[See General Information for Fire Resistance Ratings - CAN/ULC-S101 Certified for Canada](#)

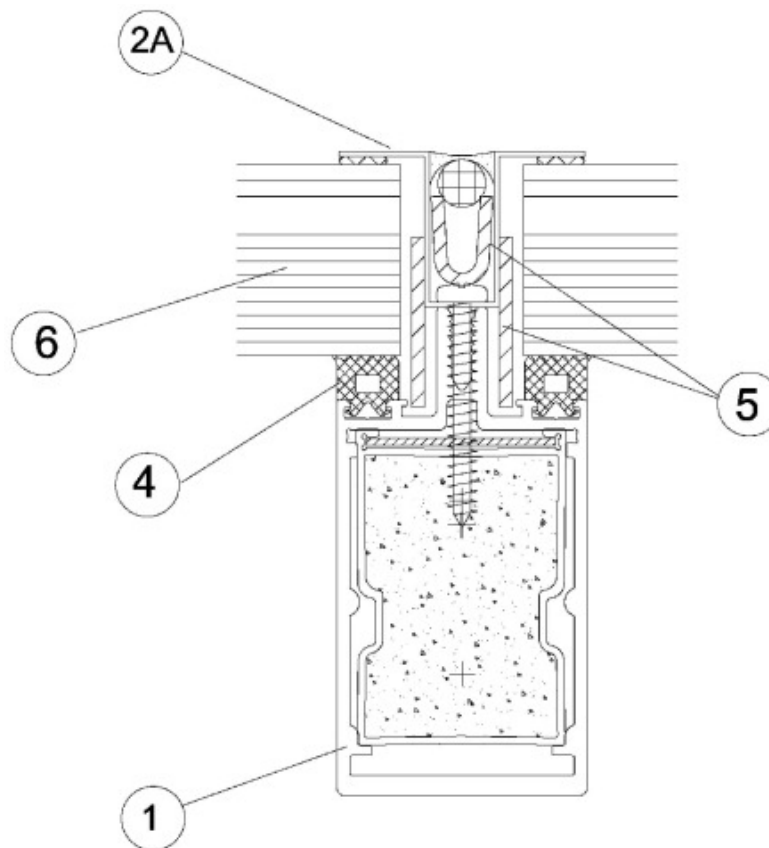
Design No. U544

May 15, 2014

Non-Bearing Wall Rating - 1 Hr.

*** Indicates such products shall bear the UL or cUL Certification Mark for jurisdictions employing the UL or cUL Certification (such as Canada), respectively.**





1. **Composite Framing Members*** — Nom. 1-15/16 in. wide (50 mm) with a nom. minimum depth of 3-1/8 in. (79 mm) with lengths cut according to glazing size. Perimeter framing members were secured to wall with No. 14 zinc coated or stainless fasteners for drywall or ¼ in. Tapcon masonry anchors located 4 in. (101 mm) in from each end and then located every 17-11/16 in. (450 mm) on center through side of the framing member. Horizontal mullions are to be secured to the vertical framing members using the mullion clips supplied with the framing prior to installation of the glazing. The horizontal mullions are fastened with two screws where the mullion overlaps the vertical framing. Installation of frames, mullion clips and brackets to be made in accordance with the installation instructions for this system. An optional screw applied extruded aluminum retainer can be attached to the framing member to permit the installation of a decorative aluminum trim cap opposite the glazing pocket. The retainer and decorative trim cap is to be supplied with the framing members.

ALUFLAM NORTH AMERICA L L C — Curtainwall Series

2. **Stainless Steel Retaining Clips** — Supplied with the framing members. Nom. 1-15/16 in. (49 mm) wide by 5/8 in. (17 mm) tall, clips are located Nom. 5-13/16 in. in from both ends and then are located every 14-3/4 in. OC. Clips are screwed to the framing member with nom. 1/4 in. diameter by 1-1/4 in. long machine screws and are used to clamp the glazing (Item 6) into place.

2A. **Stainless Steel Retaining Channel (Optional)** — In lieu of the stainless steel retaining clips (Item 2), the framing members can be supplied with continuous stainless steel glass retaining channels. Nom. 1-15/16 in. (49 mm) wide with anchoring holes located Nom. 5-13/16 in. in from both ends and then every 14-3/4 in. OC. Channel is screwed to the framing member with nom. 1/4 in. diameter by 1-1/4 in. long machine screws and are used to clamp the glazing (Item 6) into place.

3. **Pressure Plates and Caps** — Supplied with the framing members. Nom 1-7/8 in. (45.5 mm) wide with a nom. minimum depth of 7/16 in. (11.1 mm) with lengths cut according to glazing size. The pressure plates are anchored into the mullions with machine screws over the stainless steel retaining clips and the pressure caps in turn snap over the pressure plates with no mechanical fasteners. Pressure plates and caps are not supplied when continuous stainless steel retaining channels are used per Item 2A.

4. **EPDM Gaskets** — Supplied with the framing members. Two nom. 1/2 in. (12.7 mm) wide by 1/2 in. (12.7 mm) thick EPDM strips applied to the pressure caps to cushion and seal the glazing material when installed. Gaskets are cut to length to fit the pressure plates and framing members.

5. **Glazing Compounds** — Supplied with the framing members. Nom. 3/8 in. (9.53 mm) wide by nom. 1/8 in. (3.2 mm) thick self-adhesive intumescent strip applied to the setting plates if calcium silicate setting blocks are not used. Strips of 1-1/16 in. wide by 1/16 in. thick self-adhesive intumescent material, supplied with the framing materials, be applied to the framing adjacent to the edges of the glazing panels.. Intumescent strip can be trimmed to match the thickness of the glazing.

6. **Fire Resistant Glazing Material*** — Nom. 1 in (25 mm) minimum thickness laminated glass supplied in various sizes. Max size not to exceed 34.7 sq ft with maximum exposed light dimensions of 94-1/2 in. (2399 mm) in height or width.

When Swissflam Structure 60-N2 with a 31 mm nominal thickness is used, the exposed height of glass is not to exceed 94-1/2 in. but the overall width can be greater than 94-1/2 in. due to the joint feature incorporated into the Swissflam Structure product. When Contraflam Structure 60 with a 31 mm nominal thickness is used, the maximum exposed area per panel is not to exceed 52.6 ft² and the exposed height of the glass is not to exceed 138-1/2 in. The overall width for the glazing can be greater than 94-1/2 in. due to the joint incorporated into the Contraflam Structure 60.

VETROTECH SAINT-GOBAIN NORTH AMERICA INC — Swissflam 60, Swissflam Structure 60, Contraflam 60 and Contraflam Structure 60

6A. **Infill Panel** — (Not Shown) —As an alternate to Item 6, supplied with the framing members (Item 1), minimum 1-3/4 in. (44 mm) thick fixed panel used to infill the openings in the framing members. The fixed panel is constructed from two 20 mm thick calcium silicate boards fastened together with 1-1/2 in. long 16 gauge staples spaced 12 in. OC. and faced on each side with 0.079 in. (2 mm) thick aluminum.

7. **Spacers** — Spacers supplied with the framing members, used to maintain the clamping force of the pressure caps opposite the glazing panels along the perimeter of the frame, nom. 3/4 in. (20 mm) wide . Spacers to be cut to length to fit the opening as needed. Spacers can be attached to the framing members with 3/8 in. dia. pan head screws.

8. **Wall Assembly** — The 1hr fire rated wall assembly shall be constructed of the materials and in the manner described in the individual U300, U400, V400, or U900-Series Wall or Partition Designs in the UL Fire Resistance Directory.

9. **Fill, Void or Cavity Materials*** — Any UL Classified Fill, Void, or Cavity Material sealant. Caulking applied with caulking gun. See the **Fill, Void, or Cavity Materials** (XHHW) category for names of Classified companies. Material to be applied over mineral wool batting packed tightly to fill the gap between the frame and the wall.

*** Indicates such products shall bear the UL or cUL Certification Mark for jurisdictions employing the UL or cUL Certification (such as Canada), respectively.**

Last Updated on 2014-05-15

[Questions?](#)

[Print this page](#)

[Terms of Use](#)

[Page Top](#)

© 2014 UL LLC

When the UL Leaf Mark is on the product, or when the word "Environment" is included in the UL Mark, please search the [UL Environment database](#) for additional information regarding this product's certification.

The appearance of a company's name or product in this database does not in itself assure that products so identified have been manufactured under UL's Follow-Up Service. Only those products bearing the UL Mark should be considered to be Certified and covered under UL's Follow-Up Service. Always look for the Mark on the product.

UL permits the reproduction of the material contained in the Online Certification Directory subject to the following conditions: 1. The Guide Information, Assemblies, Constructions, Designs, Systems, and/or Certifications (files) must be presented in their entirety and in a non-misleading manner, without any manipulation of the data (or drawings). 2. The statement "Reprinted from the Online Certifications Directory with permission from UL" must appear adjacent to the extracted material. In addition, the reprinted material must include a copyright notice in the following format: "© 2014 UL LLC".