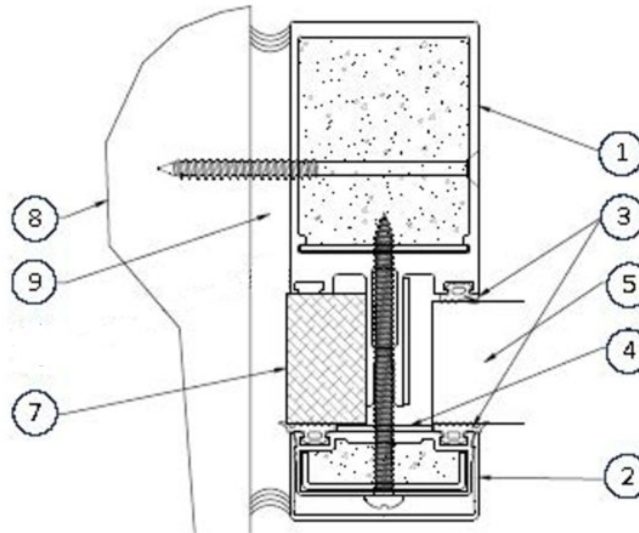


---

**Aluflam North America LLC**  
**Design No. AFM/AF 120-01**  
**Fire Rated Aluminum Frames**  
**Aluflam AW60 Series**  
**ASTM E119, UL 263, CAN/ULC-S101**  
**Rating: 2 Hour, Non-Load Bearing Wall**

---



- 1. CERTIFIED MANUFACTURER:** Aluflam North America LLC.

**CERTIFIED PRODUCT:** Aluflam AW60 Curtainwall Series.

Cut nominal 2-3/8 in. wide (60 mm) aluminum framing material to length according to glazing size. Framing material has a min. depth of 4-7/8 in. (124 mm) for vertical mullions, and a min. depth of 4 in. (102 mm) for horizontal mullions. Secure to supporting construction using 1/4 in. diameter steel fasteners located 4 in. (100 mm) from each end and located max. 17-1/2 in. (450 mm) on center (oc) through the side of the framing member. Secure the horizontal mullions to the vertical framing members using two No. 8 FH sheet metal screws.

Install the framing members, mullion clips, and mullions in accordance with the installation instructions for this system. The back of horizontal mullions are finished with friction fit aluminum caps. Mullion clips and caps are supplied by Aluflam North America LLC.

- 2. PRESSURE PLATES AND CAPS:** Cut nominal 2-1/4 in. (57 mm) × min. 3/4 in. (19 mm) deep pressure plates and caps according to glazing size. Fasten the pressure plates directly to the framing members (Item 1) with 1/4 in. (6.3 mm) steel screws with length depending on glass thickness, located max. every 11-1/2 in. (300 mm) oc. Snap the caps over the pressure plates with no mechanical fasteners once the pressure plates are secured. Pressure plates and caps are supplied by Aluflam North America LLC.



- 3. GLAZING GASKETS:** Cut EPDM glazing gaskets to length to fit the pressure plates and framing members. Install on both sides of the glazing material (Item 5). Glazing gaskets are supplied by Aluflam North America LLC.
- 4. INTUMESCENT TAPE:** Apply nominal 1-3/16 in. (30 mm) wide × nominal 1/16 in. (2 mm) thick self-adhesive intumescent strips to the pressure plates. Apply strips of 1/16 in. (2 mm) thick self-adhesive intumescent material of varying width, depending on glass thickness, to the framing adjacent to the edges of the glazing panels. Intumescent strips are supplied by Aluflam North America LLC.
- 5. FIRE RESISTANCE RATED GLAZING MATERIAL:** Install one of the following:  
  
Fire resistance rated glass panel by VETROTECH SAINT-GOBAIN NORTH AMERICA INC. See Table 1 and Table 2 at the end of this document for options and limitations. Glazing must bear a third-party certification label confirming that the product is certified to ASTM E119, UL 263, or CAN/ULC-S101 as applicable for a min. 2-hour fire resistance rating.
- 6. INFILL PANELS:** (Optional, Not Shown) Nominal 2-1/4 in. (57 mm) thick infill panels can be used to infill the openings in the framing members as an alternative to Fire Resistant Glazing (Item 5). Infill panels are supplied by Aluflam North America LLC.
- 7. PERIMETER SPACERS:** Cut spacers to length to fit the opening as needed. Attach nominal 1 in. (25 mm) wide spacers to framing members with 5/32 in. diameter screws. Spacers are used to maintain the clamping force of the pressure caps opposite the glazing panels along the perimeter of the frame. Spacers are supplied by Aluflam North America LLC.
- 8. SUPPORTING CONSTRUCTION:** Min. 2-hour fire rated wall assembly.
- 9. FILL, VOID, OR CAVITY MATERIAL:** Fill the void between the framing members and the wall opening with a third-party certified ASTM E814 or UL 1479 firestop system, comprising of mineral fiber insulation and caulk, with a min. 2-hour fire resistance rating.
- 10. SHIMS/SETTING BLOCKS:** (Not Shown) Place min. 1/8 in. (3 mm) thick hard fiber or hardwood or calcium silicate shims on bottom of glazing opening to set glazing material.
- 11. DECORATIVE TRIM:** (Not Shown) When applying decorative aluminum trim on exterior face of framing member, install extruded aluminum retainers to the framing members using screws. The retainer and trim are supplied by Aluflam North America LLC.



**Table 1: Fire Resistance Rated Glass by Vetrotech Saint-Gobain when used in a fully captured frame application:**

Glazing	Min. Nominal Thickness	Max. Exposed Area per Panel	Max. Daylight Dimensions
Contraflam 120	1-1/2 in. (39 mm)	4,421 in. <sup>2</sup> (2.852 m <sup>2</sup> )	94-7/16 in. (2399 mm)
Contraflam 120 IGU	2-1/4 in. (58 mm)	4,421 in. <sup>2</sup> (2.852 m <sup>2</sup> )	94-7/16 in. (2399 mm)
Contraflam 120	2-1/16 in. (52 mm)	4,536 in. <sup>2</sup> (2.926 m <sup>2</sup> )	Height: 126 in. (3200 mm)
Contraflam 120-1 US/C	1-7/16 in. (37 mm)	6,466 in. <sup>2</sup> (4.17 m <sup>2</sup> )	126-1/16 in. (3202 mm)

**Table 2: Fire Resistance Rated Glass by Vetrotech Saint-Gobain when used in a Butt Joint application:**

Glazing	Min. Nominal Thickness	Max. Exposed Area per Panel	Max. Daylight Dimensions
Contraflam Structure 120	2-1/16 in. (52 mm)	4,536 in. <sup>2</sup> (2.926 m <sup>2</sup> )	Height: 126 in. (3200 mm)

Contraflam Structure 120 may be manufactured with a mitered joint to allow up to a 19° angle to be formed between the glazing unit and the vertical plane to create a corner or bowed assembly. Overall widths may be greater than 94-5/8 in. by the dimensions of the joint feature incorporated into these products. However, max. exposed height is limited to listed dimension.

- 1) All glazing units may contain fully, or partially enameled heat-strengthened or fully tempered glass produced by applying and baking of ceramic paints of any color on one or both exterior faces.
- 2) All glazing units may contain patterned glass on one or both exterior faces. Patterned glass shall be 1mm thicker than the standard outer pane of the Contraflam unit.
- 3) All glazing units may be constructed into an Insulated Glazing Unit (IGU) configuration, with tempered or laminated glazing panes, with a Low-E outboard lite as the exterior surface separated from the main panel with a spacer.
- 4) All glazing units, except Contraflam 60-1, may contain laminated glass panes instead of the tempered outer panes. Minimum 8mm laminated panes made from 44.2 glass make-up.
- 5) Individual glass panes of the Contraflam can be thicker.



*Consult the listing report on the Directory of Building Products (<https://bpdirectory.intertek.com>) for the edition of the standard(s) evaluated.*

*Compliance of the assembly described in this Design Listing with the referenced standard relies on verification that the assembly constructed in the field is consistent with that described herein. Intertek certified products may be verified by the approved Intertek label; other products must be verified by the Authority Having Jurisdiction as meeting the specifications stated herein.*