

Aluflam North America LLC
Design No. AFM/AF 60-01
Fire Rated Aluminum Frames
Aluflam AF85 Series
ASTM E119, UL 263, CAN/ULC-S101
Rating: 1 Hour, Non-Load Bearing Wall

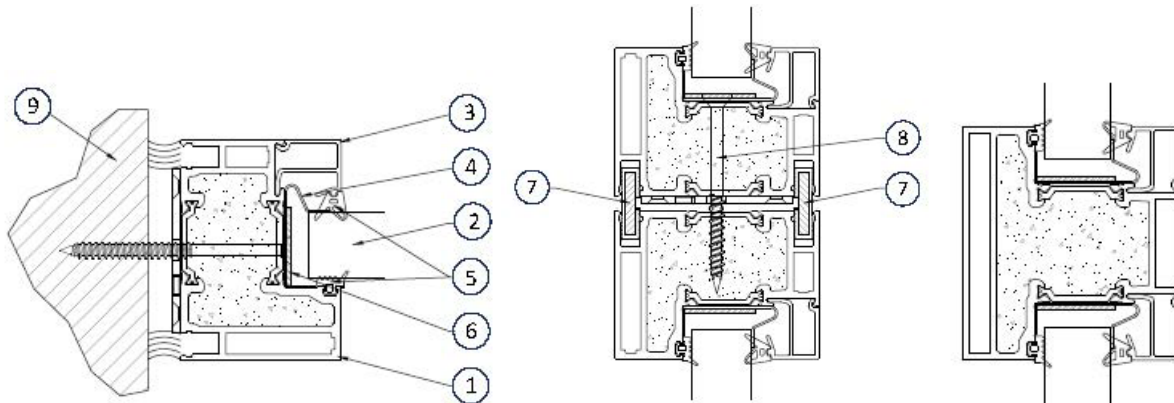


Figure 1

Figure 2

Figure 3

1. **CERTIFIED MANUFACTURER:** Aluflam North America LLC.

CERTIFIED PRODUCT: Aluflam AF85 Series

Fix nominal 3-3/8 in. (85 mm) deep Aluflam AF85 Series aluminum framing members to supporting construction using min. 1/4 in. diameter steel fasteners, min. 3-1/2 in. (89 mm) long, spaced max. 17-1/2 in. (450 mm) on center (oc).

2. **FIRE RESISTANCE RATED GLAZING MATERIAL:** Fire resistance rated glass panel by VETROTECH SAINT-GOBAIN NORTH AMERICA INC. See Table 1 and Table 2 at the end of this document for options and limitations. Glazing must bear a third-party certification label confirming that the product is certified to ASTM E119, UL 263, or CAN/ULC-S101 as applicable for a min. 1-hour fire resistance rating.

3. **GLAZING BEADS:** Cut 7/8 in. (22 mm) wide aluminum glazing of varying depth depending on glass thickness to fit tightly along the perimeter of glazing material. Snap the beads into the extrusion of the framing member (Item 1). Glazing beads are supplied by Aluflam North America LLC.

4. **RETAINING CLIPS:** Attach 1/32 in. (0.6 mm) thick steel retaining clips, 3/4 in. (20 mm) wide of varying length depending on glass thickness to the framing member with 1/8 in. diameter x 5/8 in. (16 mm) long steel screws. Locate the clips at 15-3/4 in. (400 mm) oc along every framing member. Clips are installed by Aluflam North America LLC.

5. **GLAZING GASKETS:** Cut EPDM glazing gaskets to length to match the glazing panel sizes. Install on either side of the glazing material (Item 2). Glazing gaskets are supplied by Aluflam North America LLC.



- 6. APERTURE LINING:** Line the inside of each glass opening with 1/16 in. (2 mm) thick × 1-3/16 in. (30 mm) wide self-adhering intumescent tape. Intumescent tape is installed by Aluflam North America LLC.
- 7. CONNECTING SPLINE ASSEMBLY:** Use 1 in. wide × 5/32 in. thick aluminum splines to combine multiple smaller frames to create larger assemblies. Cut aluminum splines to length to match the width or height of the assembly. The framing members (Item 1) include a groove in the profile for the acceptance of the spline on both sides of the extrusion. Splines are supplied by Aluflam North America LLC.
- 8. CONNECTING SCREWS:** When combining frames together with splines, mechanically fasten the frames together using 1/4 in. diameter × 3-1/4 in. (82 mm) long steel concrete screws, located max. 17-1/2 in. (450 mm) oc.
- 9. SUPPORTING CONSTRUCTION:** Min. 1-hour fire rated wall assembly.
- 10. SHIMS/SETTING BLOCKS:** (Not Shown) Place min. 1/8 in. (3 mm) thick hard fiber or hardwood or calcium silicate shims on bottom of glazing opening to set glazing material.
- 11. DECORATIVE TRIM:** (Not Shown) When applying decorative aluminum trim on exterior face of framing member, install extruded aluminum retainers to the framing members using screws. The retainer and trim are supplied by Aluflam North America LLC.



Table 1: Fire Resistance Rated Glass by Vetrotech Saint-Gobain when used in a fully captured frame application:

Glazing	Min. Nominal Thickness	Max. Exposed Area per Panel	Max. Daylight Dimensions
Contraflam 60	1 in. (25 mm)	4,456 in. ² (2.875 m ²)	94-13/16 in. (2408 mm)
Contraflam 60-3	1-1/16 in. (28 mm)	4,456 in. ² (2.875 m ²)	94-13/16 in. (2408 mm)
Contraflam 60-3 IGU	1-9/16 in. (40 mm)	4,456 in. ² (2.875 m ²)	94-13/16 in. (2408 mm)
Contraflam 60-3 IGU Blind	1-9/16 in. (40 mm)	4,456 in. ² (2.875 m ²)	94-13/16 in. (2408 mm)
Contraflam 60	1-3/16 in. (31 mm)	7,574 in. ² (4.887 m ²)	Height: 138-1/2 in. (3518 mm)
Contraflam 60-1 US/C	1-1/8 in. (28 mm)	7,408 in. ² (4.78 m ²)	138-7/16 in. (3516 mm)

Table 2: Fire Resistance Rated Glass by Vetrotech Saint-Gobain when used in a Butt Joint application:

Glazing	Min. Nominal Thickness	Max. Exposed Area per Panel	Max. Daylight Dimensions
Contraflam Structure 60	1-3/16 in. (31 mm)	7,574 sq.in (4.887 m ²)	Height: 138-1/2 in. (3518 mm)

Contraflam Structure 60 may be manufactured with a mitered joint to allow up to a 19° angle to be formed between the glazing unit and the vertical plane to create a corner or bowed assembly. Overall widths may be greater than 94-5/8 in. by the dimensions of the joint feature incorporated into these products. However, max. exposed height is limited to listed dimension.

- 1) All glazing units may contain fully, or partially enameled heat-strengthened or fully tempered glass produced by applying and baking of ceramic paints of any color on one or both exterior faces.
- 2) All glazing units may contain patterned glass on one or both exterior faces. Patterned glass shall be 1mm thicker than the standard outer pane of the Contraflam unit.
- 3) All glazing units may be constructed into an Insulated Glazing Unit (IGU) configuration, with tempered or laminated glazing panes, with a Low-E outboard lite as the exterior surface separated from the main panel with a spacer.
- 4) All glazing units, except Contraflam 60-1, may contain laminated glass panes instead of the tempered outer panes. Minimum 8mm laminated panes made from 44.2 glass make-up.
- 5) Individual glass panes of the Contraflam can be thicker.



Consult the listing report on the Directory of Building Products (<https://bpdirectory.intertek.com>) for the edition of the standard(s) evaluated.

Compliance of the assembly described in this Design Listing with the referenced standard relies on verification that the assembly constructed in the field is consistent with that described herein. Intertek certified products may be verified by the approved Intertek label; other products must be verified by the Authority Having Jurisdiction as meeting the specifications stated herein.